

PART OF S. E. 1/4 SEC. 26, T.6N., R.2W., S.L.B. & M.
CIRCLE "R" INDUSTRIAL PARK SUBDIVISION

131

TAXING UNIT 17

IN WEBER COUNTY

PREFIX 15-131

SCALE 1"=50'

SEE PAGE 132

EXCEPT WHERE OTHERWISE SHOWN
 ALL LOTS OWNED BY:
 OSCAR W. ROYCE
 SHARON F. ROYCE

SEE PAGE 72

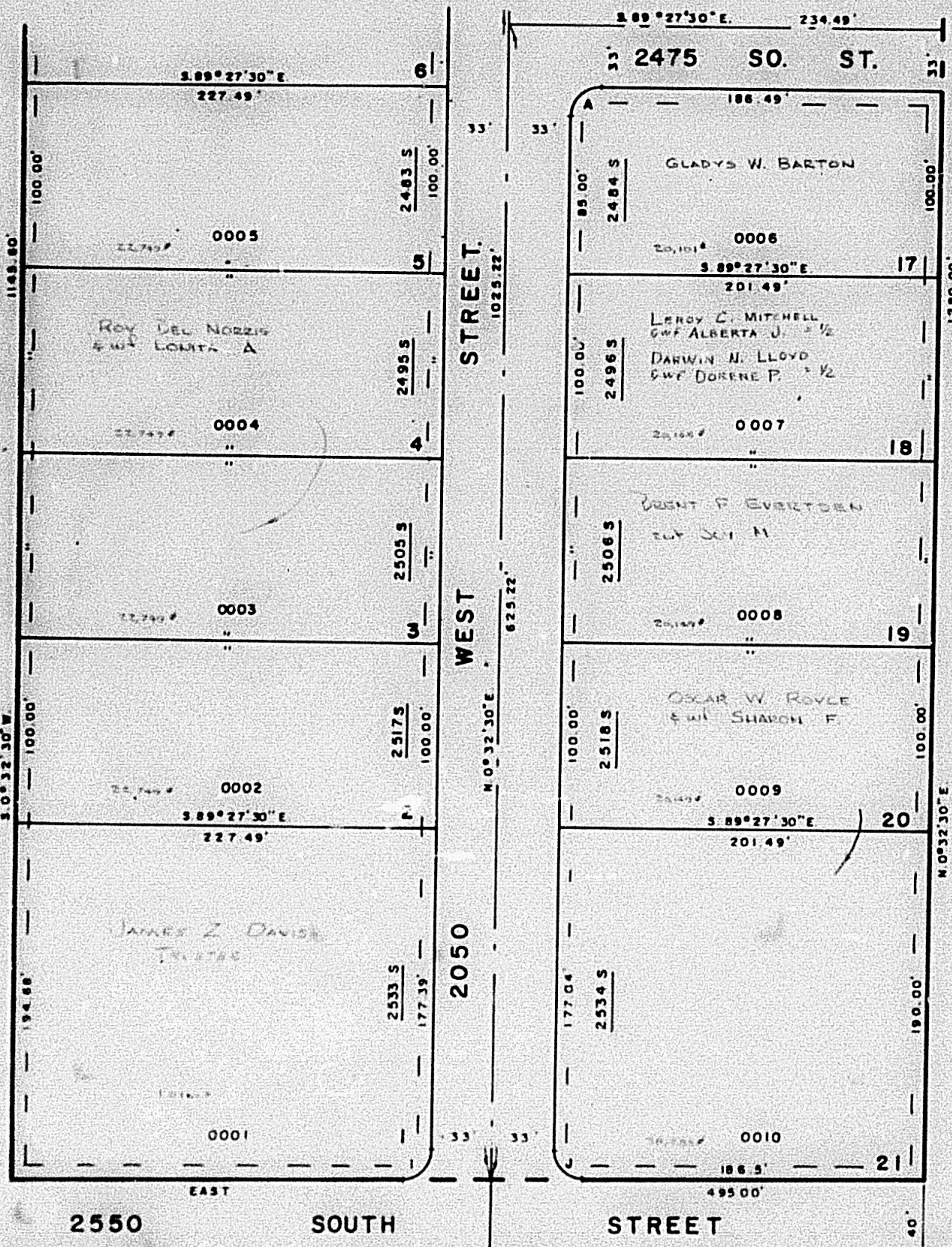
SEE PAGE 73

CURVE DATA

A	I	J
Δ=90°	90°32'30"	89°27'30"
R=15.0'	15.0'	15.0'
L=23.56'	23.70'	23.42'

ALL UTILITY EASEMENTS ARE
 7' WIDE UNLESS OTHERWISE
 NOTED

FOR COMPLETE ENG. DATA
 SEE ORIG. DED. PLAN IN
 BOOK 20, PAGE 69



15

SEE PAGE 95

825.00' WEST
 S.E. COR. SEC. 28

W.F.J. 6-77